

## ZPure™ Glass Purifiers & Filters



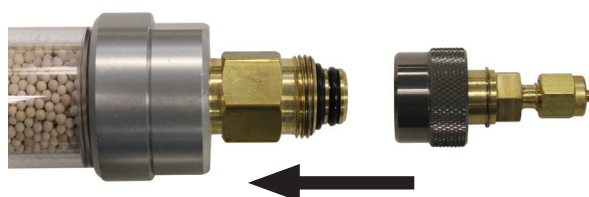


## Glass Indicating ZPure™ Purifiers and Filters

- A range of convenient point-of-use purifiers for many applications, with high-sensitivity visual indicators for oxygen and water breakthrough
- Isolates the gas stream if the glass should break
- High capacity adsorbents with well-characterized performance
- Integrated stainless steel frits for particle removal
- Fluoroelastomer seals for inertness
- Individually helium leak-tested
- Available with compression and quick connect fittings

\*Filter lifetime is dependent on quality of incoming gas and the flow rate.

\*For more detailed specifications on individual applications please contact CRS at [sales@chromres.com](mailto:sales@chromres.com).



Compression Fittings : Seals well and can be broken and retightened many times if used properly. Compatible with industry standard ferrules and tubing.

Quick Connect Fittings : Used for fast connections and replacements. Superior seal using O-rings and check valves to protect gas lines.



Oxygen Adsorbent:  
Top: Full Capacity; Bottom: Depleted.



Moisture Adsorbent:  
Top: Full Capacity; Bottom: Depleted.



CoFree™ Adsorbent:  
Top: Full Capacity; Bottom: Depleted.



## ZPure™ PolyGas I Purifiers

The ZPure PolyGas I Purifier removes O<sub>2</sub>, H<sub>2</sub>O, CO<sub>2</sub>, CO, halogenated compounds, siloxanes, hydrocarbons heavier than butane, sulfur-containing molecules, and ammonia from inert gases, He, Ar, N<sub>2</sub> and H<sub>2</sub>. It can be used to provide end-point detection for use with other ZPure Filters. The indicators signal oxygen breakthrough when the adsorbent changes from green to grey and the moisture indicator changes from blue to brown.

The ZPure Glass Filters and Purifiers are available with standard compression fittings or quick connect fittings in 1/4" and 1/8" brass and stainless steel.

	Capacity	Efficiency	Nominal Flow Rate	Max Recommended Flow Rate	Hazardous Shipping	Max. Pressure	Gases to be Purified	Approximate Dimensions	Fitting Type	Part Number
38 cc	O <sub>2</sub> : 80 cc H <sub>2</sub> O: 1.4 g HC: 1.0 g	O <sub>2</sub> : < 5 H <sub>2</sub> O: < 20 HC: < 5	200 mL/min	400 mL/min*	NO	6.9 bar / 100 psig	Inert Carrier Gas, He, N <sub>2</sub> , H <sub>2</sub> , Ar	3.8 cm x 26.3 cm	1/8 in Brass Compression Fittings	202314-B
									1/8 in Stainless Steel Compression Fittings	202314-SS
									1/4 in Brass Compression Fittings	202315-B
									1/4 in Stainless Steel Compression Fittings	202315-SS
								3.8 cm x 33 cm (26.8 cm w/o adapters)	1/8 in Brass Quick Connect Fittings	202314-B-QC
									1/8 in Stainless Steel Quick Connect Fittings	202314-SS-QC
									1/4 in Brass Quick Connect Fittings	202315-B-QC
									1/4 in Stainless Steel Quick Connect Fittings	202315-SS-QC

\* For estimated life at higher flow rates, contact sales@ChromRes.com



## ZPure™ PolyGas II Purifiers

The ZPure PolyGas II Purifier removes H<sub>2</sub>O, CO<sub>2</sub>, halogenated compounds, siloxanes, hydrocarbons heavier than butane, sulfur-containing molecules, and ammonia from inert gases, He, Ar, N<sub>2</sub> and H<sub>2</sub>. It can be used to provide end-point detection for use with other ZPure Filters. The moisture indicator signals breakthrough when it changes from blue to brown.

The ZPure Glass Filters and Purifiers are available with standard compression fittings or quick connect fittings in 1/4" and 1/8" brass and stainless steel.

	Capacity	Efficiency	Nominal Flow Rate	Max Recommended Flow Rate	Hazardous Shipping	Max. Pressure	Gases to be Purified	Approximate Dimensions	Fitting Type	Part Number
38 cc	H <sub>2</sub> O: 1.9 g HC: 1.8 g	H <sub>2</sub> O: < 20 HC: < 5	200 mL/min	400 mL/min*	NO	6.9 bar / 100 psig	Inert Carrier Gas, He, N <sub>2</sub> , H <sub>2</sub> , Ar, Air	3.8 cm x 26.3 cm	1/8 in Brass Compression Fittings	202318-B
									1/8 in Stainless Steel Compression Fittings	202318-SS
									1/4 in Brass Compression Fittings	202319-B
									1/4 in Stainless Steel Compression Fittings	202319-SS
								3.8 cm x 33 cm (26.8 cm w/o adapters)	1/8 in Brass Quick Connect Fittings	202318-B-QC
									1/8 in Stainless Steel Quick Connect Fittings	202318-SS-QC
									1/4 in Brass Quick Connect Fittings	202319-B-QC
									1/4 in Stainless Steel Quick Connect Fittings	202319-SS-QC

\* For estimated life at higher flow rates, contact sales@ChromRes.com



## ZPure™ O<sub>2</sub> Filters

The ZPure O<sub>2</sub> Filter removes oxygen to low ppb levels from He, Ar, N<sub>2</sub>, or methane. The indicator signals oxygen breakthrough when adsorbent changes from green to grey.

The ZPure Glass Filters and Purifiers are available with standard compression fittings or quick connect fittings in 1/4" and 1/8" brass and stainless steel.

	Capacity	Efficiency	Nominal Flow Rate	Max Recommended Flow Rate	Hazardous Shipping	Max. Pressure	Gases to be Purified	Approximate Dimensions	Fitting Type	Part Number
10 cc	O <sub>2</sub> : 45 cc	< 5 ppb	200 mL/min	2 SLPM	HAZARDOUS UN3190	6.9 bar / 100 psig	Inert Carrier Gas, He, N <sub>2</sub> , H <sub>2</sub> , Ar	3.8 cm x 26.3 cm	1/8 in Brass Compression Fittings	202236-B
									1/8 in Stainless Steel Compression Fittings	202236-SS
									1/4 in Brass Compression Fittings	202237-B
									1/4 in Stainless Steel Compression Fittings	202237-SS
								3.8 cm x 33 cm (26.8 cm w/o adapters)	1/8 in Brass Quick Connect Fittings	202236-B-QC
									1/8 in Stainless Steel Quick Connect Fittings	202236-SS-QC
									1/4 in Brass Quick Connect Fittings	202237-B-QC
									1/4 in Stainless Steel Quick Connect Fittings	202237-SS-QC



## ZPure™ H<sub>2</sub>O HSMI Filters

The ZPure H<sub>2</sub>O HSMI Filter is for applications requiring high efficiency moisture removal. The high sensitivity indicator signals breakthrough at 1 ppm water and changes from blue to brown.

The ZPure Glass Filters and Purifiers are available with standard compression fittings or quick connect fittings in 1/4" and 1/8" brass and stainless steel.

	Capacity	Efficiency	Nominal Flow Rate	Max Recommended Flow Rate	Hazardous Shipping	Max. Pressure	Gases to be Purified	Approximate Dimensions	Fitting Type	Part Number
46 cc	H <sub>2</sub> O: 6 g	< 20 ppb	200 mL/min	2 SLPM	NO	6.9 bar / 100 psig	Inert Carrier Gas, He, N <sub>2</sub> , H <sub>2</sub> , Ar, Air	3.8 cm x 26.3 cm	1/8 in Brass Compression Fittings	202283-B
									1/8 in Stainless Steel Compression Fittings	202283-SS
									1/4 in Brass Compression Fittings	202284-B
									1/4 in Stainless Steel Compression Fittings	202284-SS
								3.8 cm x 33 cm (26.8 cm w/o adapters)	1/8 in Brass Quick Connect Fittings	202283-B-QC
									1/8 in Stainless Steel Quick Connect Fittings	202283-SS-QC
									1/4 in Brass Quick Connect Fittings	202284-B-QC
									1/4 in Stainless Steel Quick Connect Fittings	202284-SS-QC



## ZPure™ H<sub>2</sub>O Filters

The ZPure H<sub>2</sub>O Filter removes moisture to low ppb levels. The Co-Free moisture indicator signals breakthrough when it changes from green to blue.

The ZPure Glass Filters and Purifiers are available with standard compression fittings or quick connect fittings in 1/4" and 1/8" brass and stainless steel.

	Capacity	Efficiency	Nominal Flow Rate	Max Recommended Flow Rate	Hazardous Shipping	Max. Pressure	Gases to be Purified	Approximate Dimensions	Fitting Type	Part Number
46 cc	H <sub>2</sub> O: 6 g	< 20 ppb	200 mL/min	2 SLPM	NO	6.9 bar / 100 psig	Inert Carrier Gas, He, N <sub>2</sub> , H <sub>2</sub> , Ar, Air	3.8 cm x 26.3 cm	1/8 in Brass Compression Fittings	202234-B
									1/8 in Stainless Steel Compression Fittings	202234-SS
									1/4 in Brass Compression Fittings	202235-B
									1/4 in Stainless Steel Compression Fittings	202235-SS
								3.8 cm x 33 cm (26.8 cm w/o adapters)	1/8 in Brass Quick Connect Fittings	202234-B-QC
									1/8 in Stainless Steel Quick Connect Fittings	202234-SS-QC
									1/4 in Brass Quick Connect Fittings	202235-B-QC
									1/4 in Stainless Steel Quick Connect Fittings	202235-SS-QC

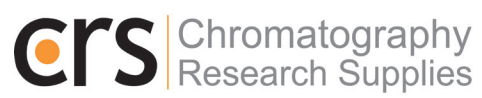


## ZPure™ H<sub>2</sub>O/HC Filters

The ZPure H<sub>2</sub>O/HC Filter removes moisture and hydrocarbons from dry air or inert gases. The Co-Free moisture indicator signals breakthrough when it changes from green to blue.

The ZPure Glass H<sub>2</sub>O/HC Filter is available with standard compression fittings or quick connect fittings in 1/4" and 1/8" brass and stainless steel.

	Capacity	Efficiency	Nominal Flow Rate	Max Recommended Flow Rate	Hazardous Shipping	Max. Pressure	Gases to be Purified	Approximate Dimensions	Fitting Type	Part Number
46 cc	H <sub>2</sub> O: 3 g HC: 2 g	H <sub>2</sub> O: < 20 HC: < 5	200 mL/min	2 SLPM	NO	6.9 bar / 100 psig	Inert Carrier Gas, He, N <sub>2</sub> , H <sub>2</sub> , Ar, Air	3.8 cm x 26.3 cm	1/8 in Brass Compression Fittings	202256-B
									1/8 in Stainless Steel Compression Fittings	202256-SS
									1/4 in Brass Compression Fittings	202257-B
									1/4 in Stainless Steel Compression Fittings	202257-SS
								3.8 cm x 33 cm (26.8 cm w/o adapters)	1/8 in Brass Quick Connect Fittings	202256-B-QC
									1/8 in Stainless Steel Quick Connect Fittings	202256-SS-QC
									1/4 in Brass Quick Connect Fittings	202257-B-QC
									1/4 in Stainless Steel Quick Connect Fittings	202257-SS-QC



2601 Technology Drive  
Louisville, KY 40299

[www.ChromRes.com](http://www.ChromRes.com)